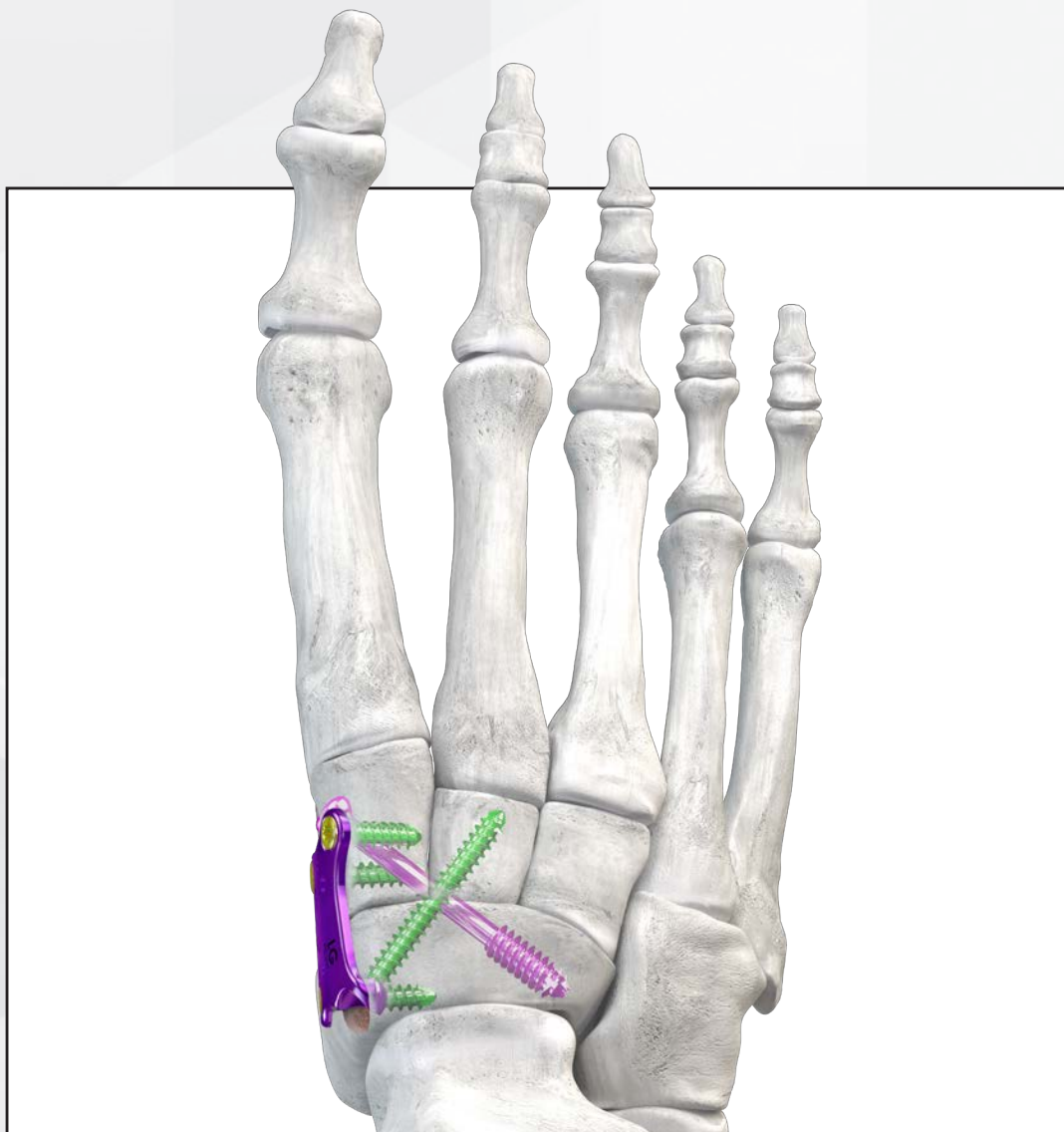


# GORILLA<sup>®</sup>

R3CON PLATING SYSTEM

## Gorilla<sup>®</sup> NC Fusion Plating System



## NC FUSION PLATING TEMPLATE

- ▶ Left and right specific
- ▶ 4 corresponding trial templates offered for each plate size
- ▶ K-wire/Olive wire holes provided for easy and reproducible transfer from template to implant
- ▶ One slotted hole for easy template removal
- ▶ Multiple Ø1.4 mm holes for provisional fixation

## FEATURES & BENEFITS

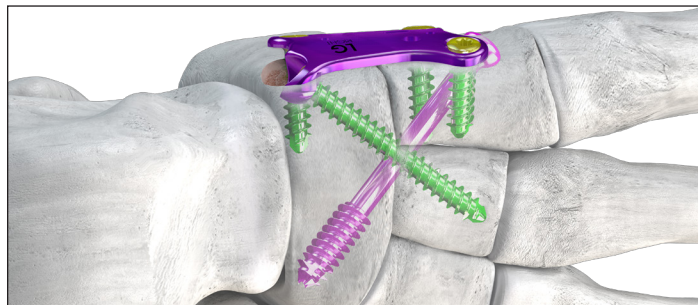
- ▶ **Guided Screw Targeting** simplifies screw placement
  - Helps to ensure fixation is achieved in highest quality bone
- ▶ **Anatomic Plate Contouring** cylindrical curvature allows for minimal manipulation of the plate to conform to anatomy

## GORILLA® NC FUSION PLATES

- ▶ Anatomically Contoured—Left and right specific
- ▶ Compression achieved across multiple joints
  - The patent-pending NC Plate with PRECISION™ Guide technology allows for a crossing screw that passes from the medial cuneiform to the lateral aspect of the navicular
    - Ø3.5 mm, Ø4.0 mm, Ø4.5 mm or Ø5.5 mm Monster® or Mini-Monster® screws
  - Proximal medial navicular to the intermediate cuneiform
  - Second locking screw in the navicular helps guard against plantar gapping

## PRECISION™ GUIDE—NC FUSION

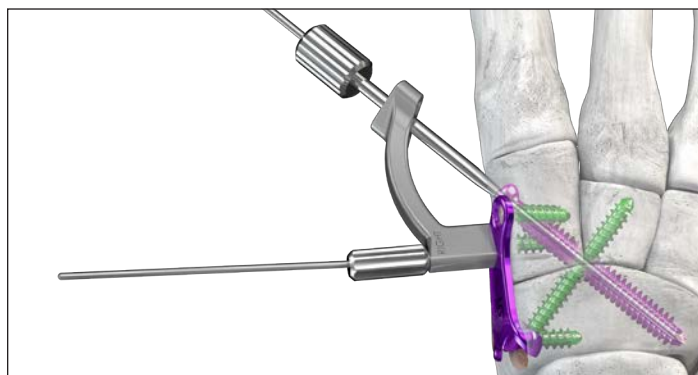
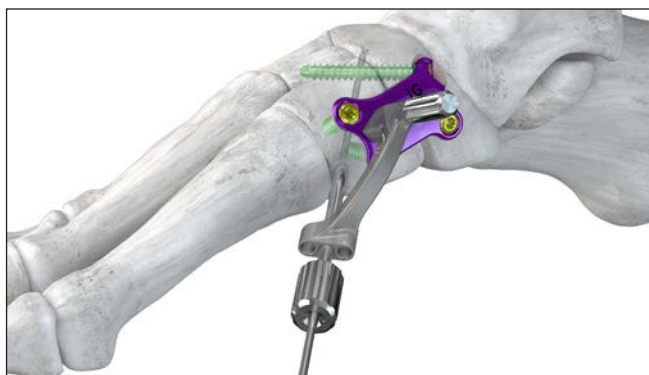
- ▶ Patent-pending guide allows for placement of cross-screw across the arthrodesis while maintaining on-axis placement of plate screws
- ▶ Provides three trajectories of guide wire paths for variations among patient anatomy
- ▶ PRECISION™ Guide allows for Ø3.5 mm, Ø4.0 mm, Ø4.5 mm or Ø5.5 mm cannulated Monster® or Mini-Monster® screws



- ▶ **Templating Trial System** allows for intraoperative trialing to help ensure plate and screws are positioned to achieve best fit and intended compression

- ▶ **Compression Through and Outside the Plate** designed to maximize distribution across fusion sites

- Two distal screws in the medial cuneiform have the ability to be placed across one, two or three cuneiforms
- ▶ Built in alignment templating
  - Laser marks provided as a parallel reference guide to the Naviculocuneiform joint
  - K-wire holes provided to show screw trajectory prior to plate placement
- ▶ Ø2.7 mm, Ø3.5 mm, Ø4.2 mm Gorilla® R3CON and TUFFNEK® screw options

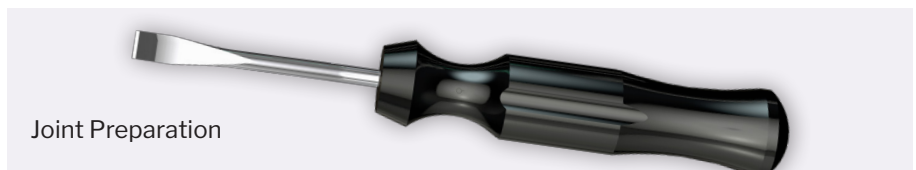




	SMALL	MEDIUM	LARGE	EXTRA LARGE
<b>Total Plates</b>	2	2	2	2
<b>Plate Length</b>	28 mm	20.5 mm	33 mm	35.5 mm
<b>Plate Thickness</b>	1.5 mm	1.5 mm	1.5 mm	1.5 mm
<b>Left and Right Offerings</b>	Yes	Yes	Yes	Yes

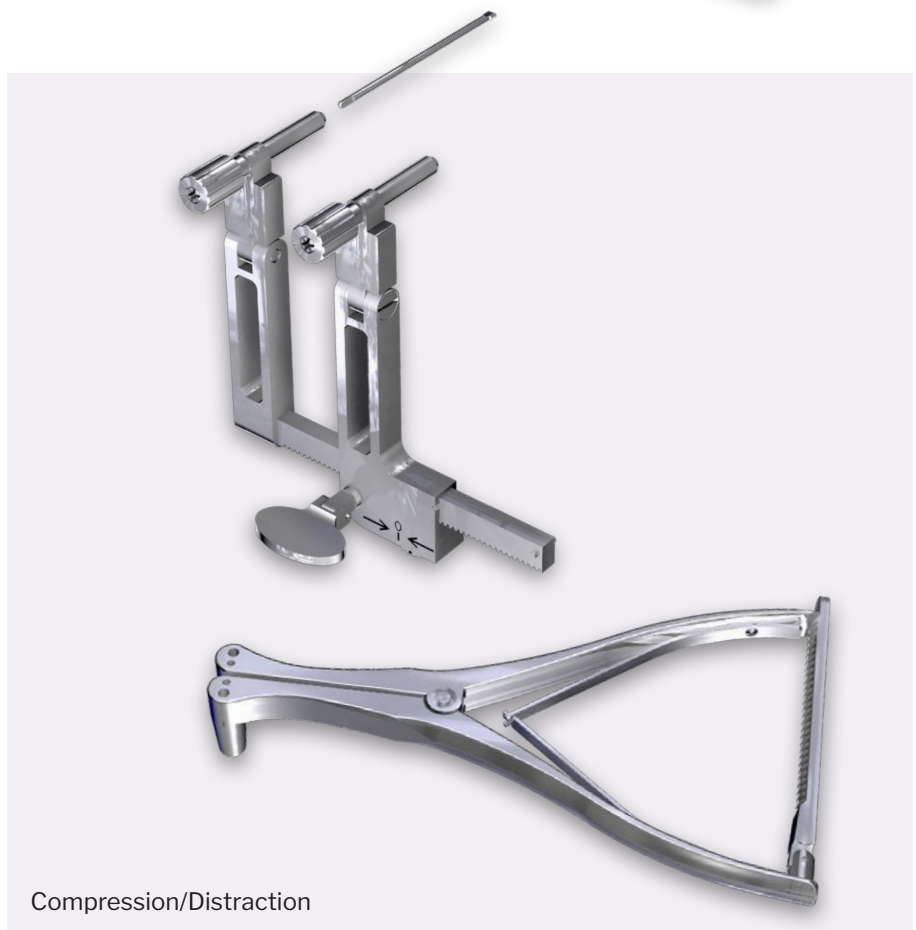
## HONEY BADGER CARTILAGE REMOVAL TOOL

- ▶ Provides “reverse cutting” functionality
- ▶ Ideal for debridement of curved, small and/or difficult to access joints



## CASPAR DEVICE

- ▶ Can be secured on either side of the plate or bone fusion site using K-wires
- ▶ Attaches to the plate to create in-line compression
- ▶ Compression and distraction capabilities




## PIN DISTRACTOR

- ▶ Accommodates both a Ø1.6 mm and Ø2.3 mm K-wire
- ▶ Creates an opening up to 28 mm  
Allows for greater exposure to joint spaces to aid in removal of osteophytes and cartilage



## Gorilla® NC Fusion Plating System

**NCFPS-01 Rev D**  
2023-09-20

Paragon 28°, Inc.   
14445 Grasslands Dr.  
Englewood, CO 80112 USA  
(855) 786-2828

Paragon 28° Medical Devices Trading Limited  
First Floor Block 7 Beckett Way  
Park West Business Park  
Dublin 12  
D12 X884  
Ireland  
+353 (0) 1588 0350

™Trademarks and \*Registered Marks of Paragon 28°, Inc.  
© Copyright 2023 Paragon 28°, Inc. All rights reserved.  
Patents: [www.paragon28.com/patents](http://www.paragon28.com/patents)

Exclusively foot & ankle <sup>28</sup>  
**Paragon**®

[www.Paragon28.com](http://www.Paragon28.com)

For the contraindications, potential complications and adverse reactions, warnings and precautions associated with this device, please refer to the device specific instructions for use at <http://www.paragon28.com/ifus>