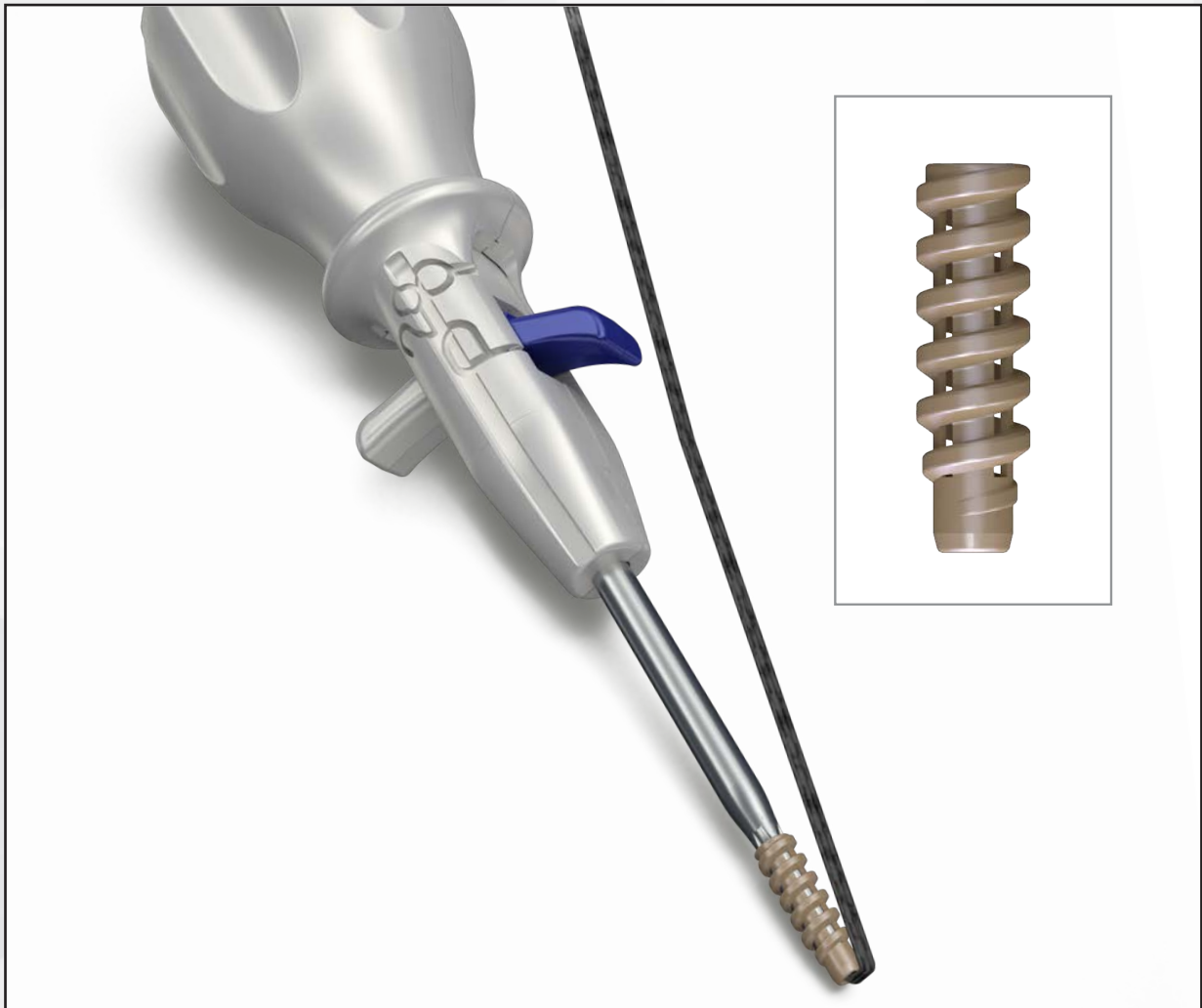


GRAPPLER™

KNOTLESS ANCHOR SYSTEM

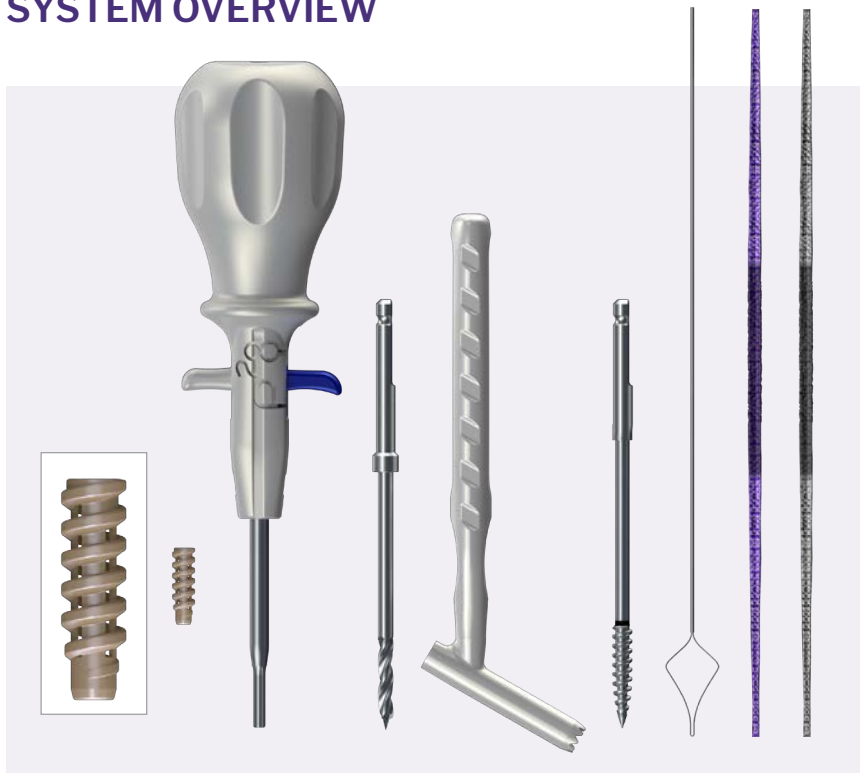
Grappler™ Knotless Anchor System



Grappler™ | Knotless Anchor System

The Grappler® Knotless Anchor System was designed to address the unique challenges that Foot and Ankle surgeons face when repairing soft tissue structures. The Grappler® Knotless Anchor System includes Bridgeline™ 4mm Suture Tape, cannulated knotless anchors, and foot and ankle specific instrumentation. The cannulated PEEK anchors are vented to facilitate bony growth, strengthening hold in bone and are available in 4.5 and 5.5 mm diameters. The anchors come preloaded with suture passer on an elegantly designed handle intended to maximize surgeon control in restoring soft tissue anatomy to the appropriate tension. Modular kit configurations are designed to minimize waste and provide surgeons the ability to address a variety of pathologies with a streamlined technique.

SYSTEM OVERVIEW



Components

- Tensioning Driver Handle
- Suture Passer
- Ø4.5 mm Cannulated Knotless PEEK Anchor
 - Ø3.5 mm Solid Drill Bit
 - Ø3.5 mm Drill Guide
 - Ø4.5 mm Tap
- Ø5.5 mm Cannulated Knotless PEEK Anchor
 - Ø4.3 mm Solid Drill Bit
 - Ø4.3 mm Drill Guide
 - Ø5.5 mm Tap
- UHMWPE Bridgeline™ 4.0 mm Suture Tape
- Adaptive Bridgeline™ 4.0 mm Suture Tape

KIT CONFIGURATIONS

Grappler™ Knotless Procedure Kits Two Ø4.5 mm Anchors w/ Bridgeline™ Tape

- ▶ Tensioning Driver preloaded with a Ø4.5 mm Knotless Anchor and suture passer
- ▶ Additional Ø4.5 mm Knotless Anchor
- ▶ Ø3.5 mm Drill Bit
- ▶ Ø3.5 mm Drill Guide
- ▶ Ø4.5 mm Tap
- ▶ UHMWPE or Adaptive Bridgeline™ 4.0 mm Suture Tape

Grappler™ Knotless Anchor Ø4.5 mm or Ø5.5 mm Implant-Only Kits

- ▶ Tensioning Driver preloaded with either the Ø4.5 or Ø5.5 mm Knotless Anchor and suture passer

Grappler™ Knotless Anchor Ø4.5 mm or Ø5.5 mm Implant and Instruments Kits:

- ▶ Tensioning Driver preloaded with either the Ø4.5 or Ø5.5 mm Knotless Anchor and suture passer
- ▶ Ø3.5 or Ø4.3 mm Drill Bit
- ▶ Ø3.5 or Ø4.3 mm Drill Guide
- ▶ Ø4.5 mm or Ø5.5 mm Tap

Additional Sterile-packed Components:

- ▶ Suture passers (Box of 5)
- ▶ Bridgeline™ Suture Tape (100% UHMWPE or Adaptive)



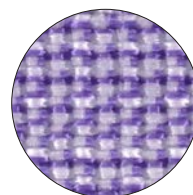
Figure 1: Grappler Knotless Anchor Two Ø4.5 mm Implant Kit

NOVEL BRIDGELINE™ SUTURE TAPE:

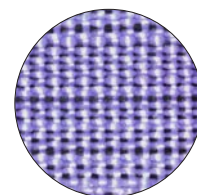
The Bridgeline™ Adaptive Tape offers surgeons a first in kind semi-resorbable material allowing for rigid stabilization of the construct upon initial fixation followed by a predetermined amount of relaxation during the healing cascade transferring load back to the native anatomy. The tape is four millimeters wide allowing for broader tissue surface interaction than competitive offerings.

Adaptive Bridgeline™ Suture Tape:

- ▶ The tape is partially absorbable. After absorption, the tape has a longer working length which promotes load-sharing with soft tissue structures.



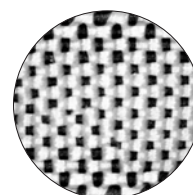
Pre-Absorption



Post-Absorption

UHMWPE Bridgeline™ Tape Features:

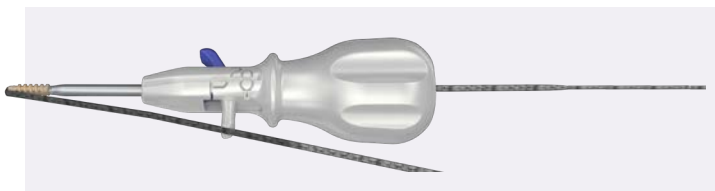
- ▶ The central third of each tape is demarcated by a black tracer strand. This allows the surgeon to plan for appropriate working length of the repair



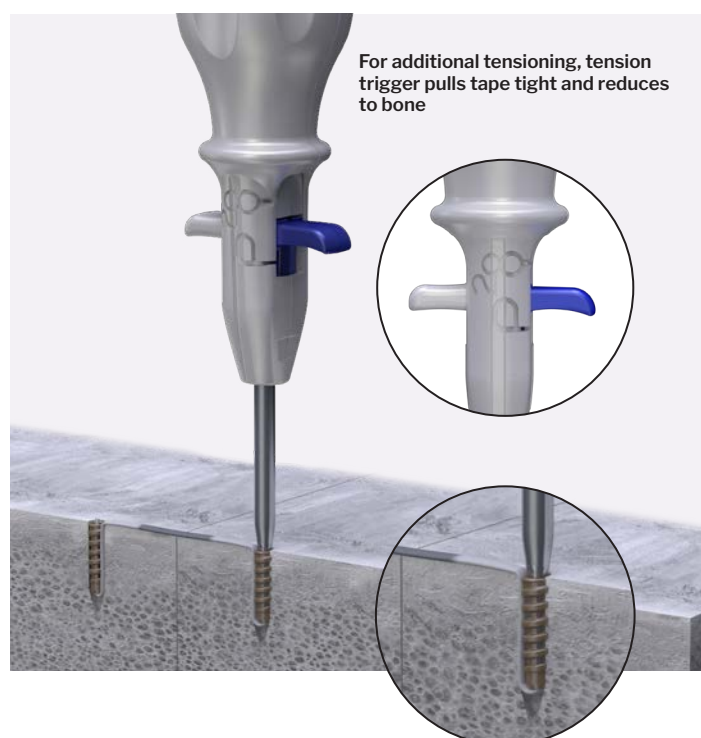
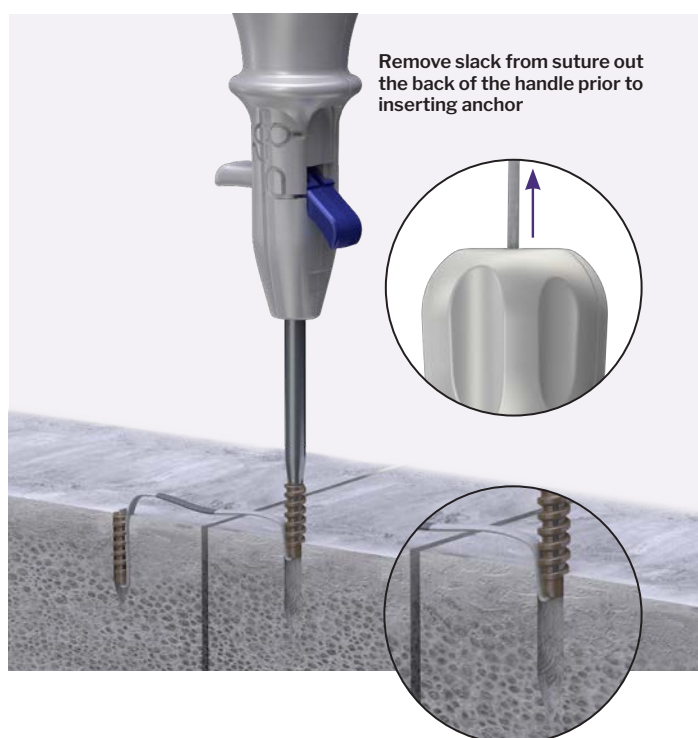
UHMWPE Weave

TENSIONING DRIVER FEATURES:

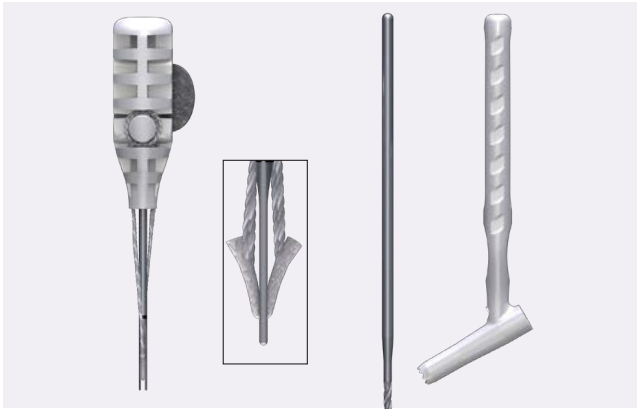
- ▶ The cannulated Tensioning Driver is utilized with the Suture Passer and Knotless Anchors to pass and tension the Suture Tape through the anchors.



Tensioning Driver Functionality

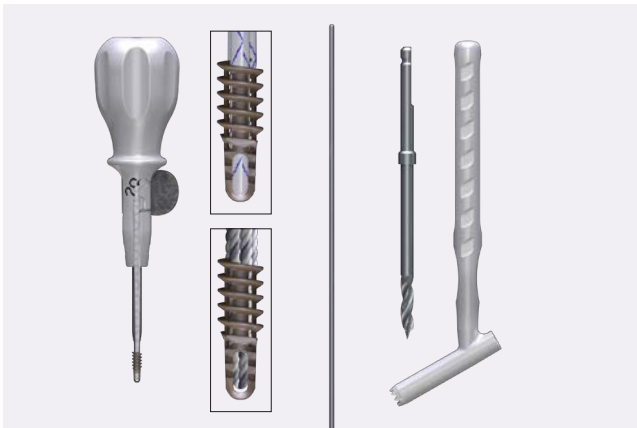


RELATED PRODUCTS: GRAPPLER® SUTURE ANCHOR—ALL SUTURE, PEEK, TITANIUM



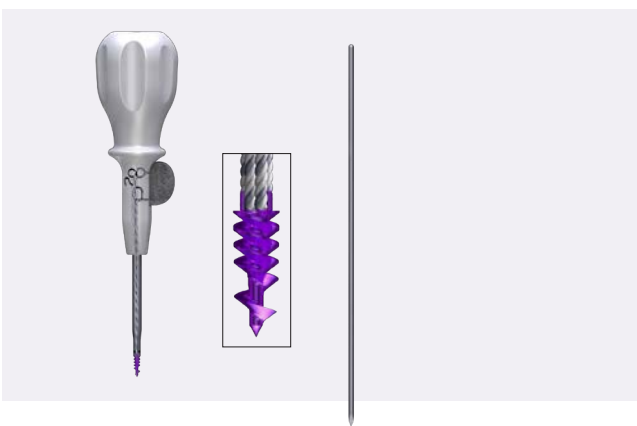
All Suture Anchor Kits

- Ø1.4 mm & Ø2.8 mm Anchor, Pre-loaded with Suture/Needles
- K-wire (Ø1.4 mm & Ø2.8 mm)
- Drill/Insertion Guide
- Handle/Insertion Fork
- Single-loaded USP 0 Suture–Ø1.4 mm Anchor
- Double-loaded USP 2 Suture–Ø2.8 mm Anchor



PEEK Anchor Kits


- Ø4.5 mm & Ø5.5 mm Anchor, Pre-loaded with Suture/Needles
- K-wire (Ø1.6 mm)
- Drill (Solid, Ø3.5 mm & Ø4.3 mm)
- Driver/Handle
- Tissue Protector
- Double loaded USP 2 Suture
- Single USP 2 Suture + 1.5 mm Tape



Titanium Anchor Kits

- Ø3.0 mm and Ø4.5 mm Anchor, Pre-loaded with Suture/Needles
- K-wire (Ø2.0 mm for 3.0 anchor and Ø2.6 mm for 4.5 anchor)
- Driver/Handle
- Double-loaded USP 0 Suture–Ø3.0 mm Anchor
- Double-loaded USP 2 Suture–Ø4.5 mm Anchor

P28-GSKL-01 Rev A
2023-01-09

Paragon 28°, Inc. 
14445 Grasslands Dr.
Englewood, CO 80112 USA
(855) 786-2828

Paragon 28° Medical Devices Trading Limited
First Floor Block 7 Beckett Way
Park West Business Park
Dublin 12
D12 X884
Ireland
+353 (0) 1588 0350

™Trademarks and *Registered Marks of Paragon 28°, Inc.
© Copyright 2024 Paragon 28°, Inc. All rights reserved.
Patents: www.paragon28.com/patents

Exclusively foot & ankle 

www.Paragon28.com

For the contraindications, potential complications and adverse reactions, warnings and precautions associated with this device, please refer to the device specific instructions for use at <http://www.paragon28.com/ifus>