

# PHANTOM

## ACTIVCORE™ NAIL SYSTEM

PRECISION® Guided  
TTC/TC Arthrodesis

Flex Coil

Precise and Reproducible Placement  
of Ø3.0 mm Drill-Pin

Inner Core and Outer Sheath Allow  
up to 8 mm of Constant Compression

Ø7.2 mm  
Pegs

Ø13.3 mm Distal Tapering  
Across the STJ and TTJ

0° - 18° Variable Placement  
of Calcaneal Threaded Pegs

Phantom ActivCore™ Nail



PRECISION® Guide

Exclusively foot & ankle  
**Paragon**<sup>20</sup>

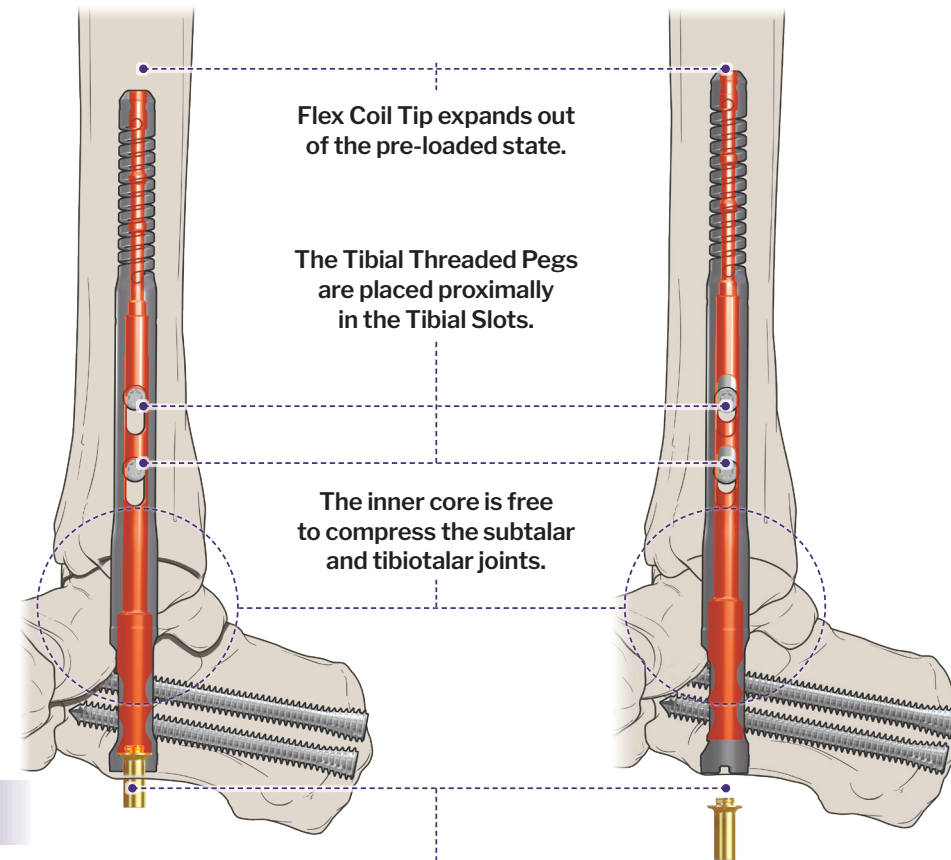
# Phantom® System Advantages

- Nail maintains compression for up to 8 mm of resorption or settling
- Weight-bearing compression achieved through patient gait
- Flexible Coil Tip allows for stress-sharing within the tibia<sup>1</sup>
- PRECISION® Guide Technology allows for precise and reproducible placement of the initial Drill-Pin to determine implant trajectory
- Variable (0° - 18°) posterior-anterior Calcaneal Threaded Peg trajectory allows for precise placement and optimized purchase
- Distal end of Nail is Ø13.3 mm through the subtalar and tibiotalar joints
- Robust offering of joint preparation instrumentation for a TC and TTC arthrodesis

## ActivCore Nail; How it Works

### PRE-LOADED STATE



### RELEASED STATE CONSTANT JOINT COMPRESSION



Upon initial release of the Tension Screw, the inner core translates proximally. The Calcaneal Threaded Pegs stay fixated in the bone and cause the calcaneus to be pulled proximally.

## Nail and Peg Offering

### Peg Offering

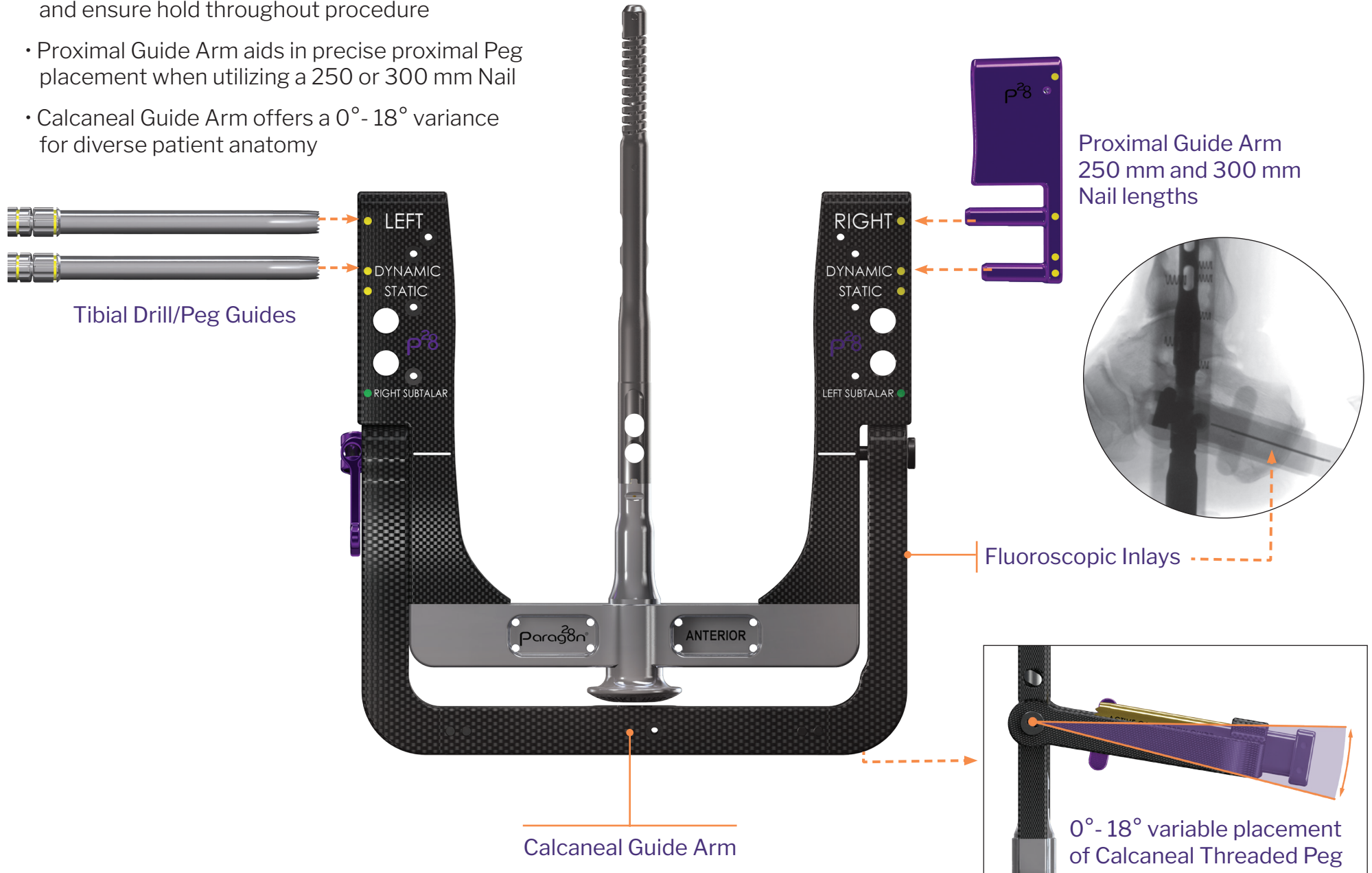
		
<b>Diameters</b>	Ø5.0 mm	Ø7.2 mm
<b>Lengths</b>	20 - 70 mm (2 mm increments)	45 - 120 mm (5 mm increments)
<b>Headed</b>	√	—
<b>Headless</b>	—	√
<b>Threads</b>	Full Threads	Full Threads
<b>Placements</b>	Tibial Nail Slots	Calcaneus Slots
<b>Material</b>	Type II Anodized Titanium Alloy	

### Phantom ActivCore™ Nail Offering

Phantom ActivCore™ Nail	Type II Anodized Titanium Alloy	Length Options (mm)				
		150	175	200	250	300
Diameter Options (mm)	Ø10.0	—	●	●	●	●
	Ø11.5	—	●	●	●	●
	Ø13.0	—	●	●	●	—

# Phantom<sup>®</sup> Ghost<sup>™</sup> Outrigger

- Rigid, radiolucent Outrigger with fluoroscopic inlays allows for visualization of Peg trajectory prior to drilling
- Friction fit slots accommodate Tibial Drill/Peg Guides and ensure hold throughout procedure
- Proximal Guide Arm aids in precise proximal Peg placement when utilizing a 250 or 300 mm Nail lengths
- Calcaneal Guide Arm offers a 0° - 18° variance for diverse patient anatomy



# Differentiated Instrumentation

- PRECISION® Guide technology allows for precise and reproducible placement of the initial Ø3.0 mm Drill-Pin to determine Nail trajectory
- Parallel Offset Guide allows for placement of an additional Drill-Pin 4 mm in any direction if alternative Nail trajectory is preferred



Parallel Offset Guide



Ø13.5 mm Stepped Reamer



Flexible Reamer and Reamer Head

Reamer Heads offered in \_\_\_\_\_  
Ø.5 mm increments (Ø8.0 mm - Ø14.0 mm)

- A robust offering of procedural instrumentation to address joint preparation and restoration of anatomic alignment



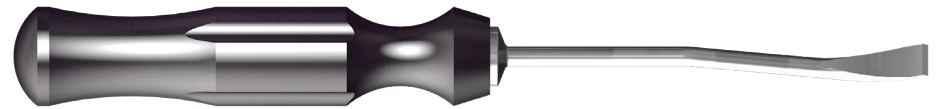
Straight 6 mm Osteotome



Bone Fenestration Perforator



Angled Curette



Honeybadger




Angled Ring Curette



Curved Bone Fenestration Chisel

PHTB-02 Rev B

Paragon 28, Inc.   
14445 Grasslands Dr.  
Englewood, CO 80112 USA  
(855) 786-2828

Paragon 28 Medical Devices Trading  
Limited  
First Floor Block 7 Beckett Way  
Park West Business Park  
Dublin 12  
D12 X884, Ireland  
+353 (0) 1588 0350

1. Internal Test Report TR-19121202

For the contraindications, potential complications and adverse reactions, warnings and precautions associated with this device, please refer to the device specific instructions for use at <http://www.paragon28.com/ifus>

™ Trademarks and ® Registered Trademarks of Paragon 28, Inc.  
© Copyright 2020 Paragon 28, Inc. All rights reserved.  
Patents: [www.paragon28.com/patents](http://www.paragon28.com/patents)

